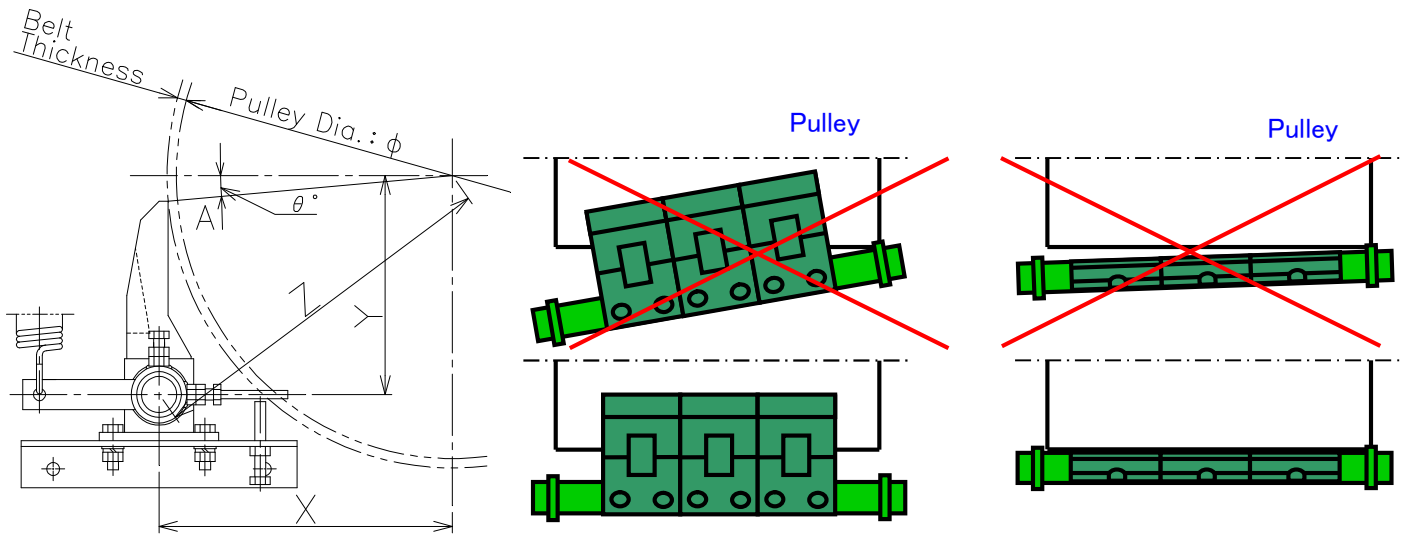


INSTALLATION INSTRUCTION FOR E-TYPE



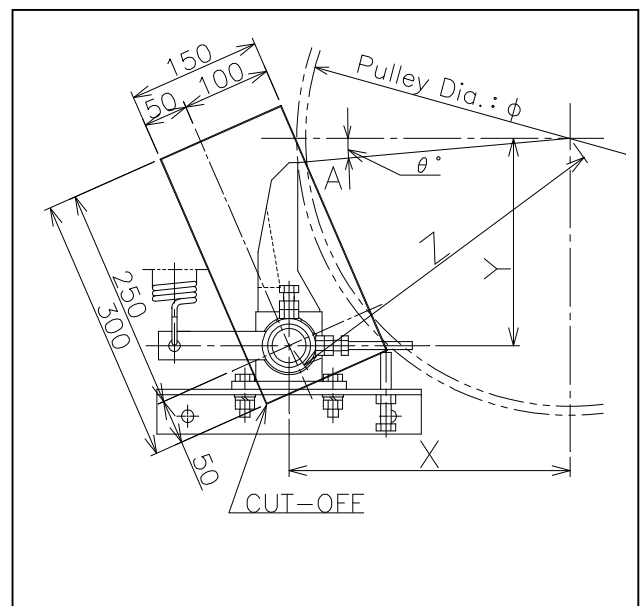
The efficiency of any belt cleaner depends on the correct installation of the equipment and maintenance after the product has been commissioned.



1. Pole position dimension

Attack Angle	(Pulley Diameter X 1/100)°		
	Pulley Diameter	X	Y
φ 300	170	213	273
φ 350	195	216	291
φ 400	219	220	311
φ 450	244	223	331
φ 500	269	228	352
φ 550	294	232	374
φ 600	318	237	397
φ 650	343	243	420
φ 700	367	249	444
φ 750	392	255	468
φ 800	416	262	492
φ 850	440	269	516
φ 900	464	277	541
φ 950	488	285	565

※Cut-Off Dimension



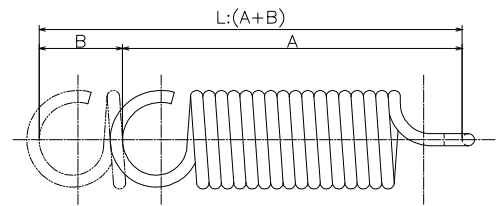
※ ATTACK ANGLE = PULLEY DIAMETER X 1/100

i.e. If the pulley diameter is φ600, the attack angle is 6° (600 X 1/100).

2. Installation procedure

- Check that the correct cleaner has been selected and supplied all the necessary parts.
- From the centerline of the pulley shaft, scribe a descending vertical line.
- Determine the center of the pole by selecting X and Y dimensions, as shown on installation diagram, according to table.
- Having established the center of the pole, select cut-off dimensions from table and cut opening, as shown in installation diagram.
- Mark and cut opposite side opening accordingly, removing any sharp edges to avoid injury.
- Re-establish X and Y dimensions to determine the center of the mounting bracket and weld on the position to the chute on the horizontal plane.
- Pass cleaner through cut-off and assemble as per installation diagram.
- Mount a bearing housed in a resin collar to a bracket and fix so that the frame pipe comes to the position set in accordance with the instruction.

Note: Check to see that the frame pipe and pulley are set in parallel and both frame pipe and are set horizontally.



- With the adjusting lever positioned perpendicular to the hook-bolt, tighten the adjusting lever lock bolt and nut. Loosen the hook-bolt nut and turn the tension adjusting nut until the spring length becomes correct as shown in below chart1. Complete on the both sides of cleaner.

※Please refer to chart below for the pressure adjustment.

■ ER-Type (Rubber-Tip)

TW	300	450	600	750	900	1050	1200	1350	1500	1650
A	165	165	165	161	161	161	161	161	165	165
B	13~20	27~37	40~54	9~14	13~19	17~24	15~22	18~25	16~23	18~26
L: (A+B)	178~ 185	192~ 202	205~ 219	170~ 175	174~ 180	178~ 185	176~ 183	179~ 186	181~ 188	183~ 191

■ EK-Type (Hard Alloy-Tip)

TW	300	450	600	750	900	1050	1200	1350	1500	1650
A	165	165	165	165	165	165	165	165	165	165
B	0~3	0~4	3~6	6~10	9~14	12~18	10~16	13~19	16~23	18~26
L: (A+B)	165~ 168	165~ 169	168~ 171	171~ 175	174~ 179	177~ 183	175~ 181	178~ 184	181~ 188	183~ 191

- Fix the stopper bolt leaving (ER=20~25mm, EK=7~10mm) space between the stopper bolt end and stopper side of the adjusting lever.
- Test run and make sure no vibration is detected.

